



**CITRIX®** | Google Cloud

## Citrix Workspace on Google Cloud Platform

Power a smarter, more flexible way to work

Organizations rely on technology to improve the way employees work. But the overload of apps, devices, data, passwords, and notifications increasingly gets in the way of getting things done.

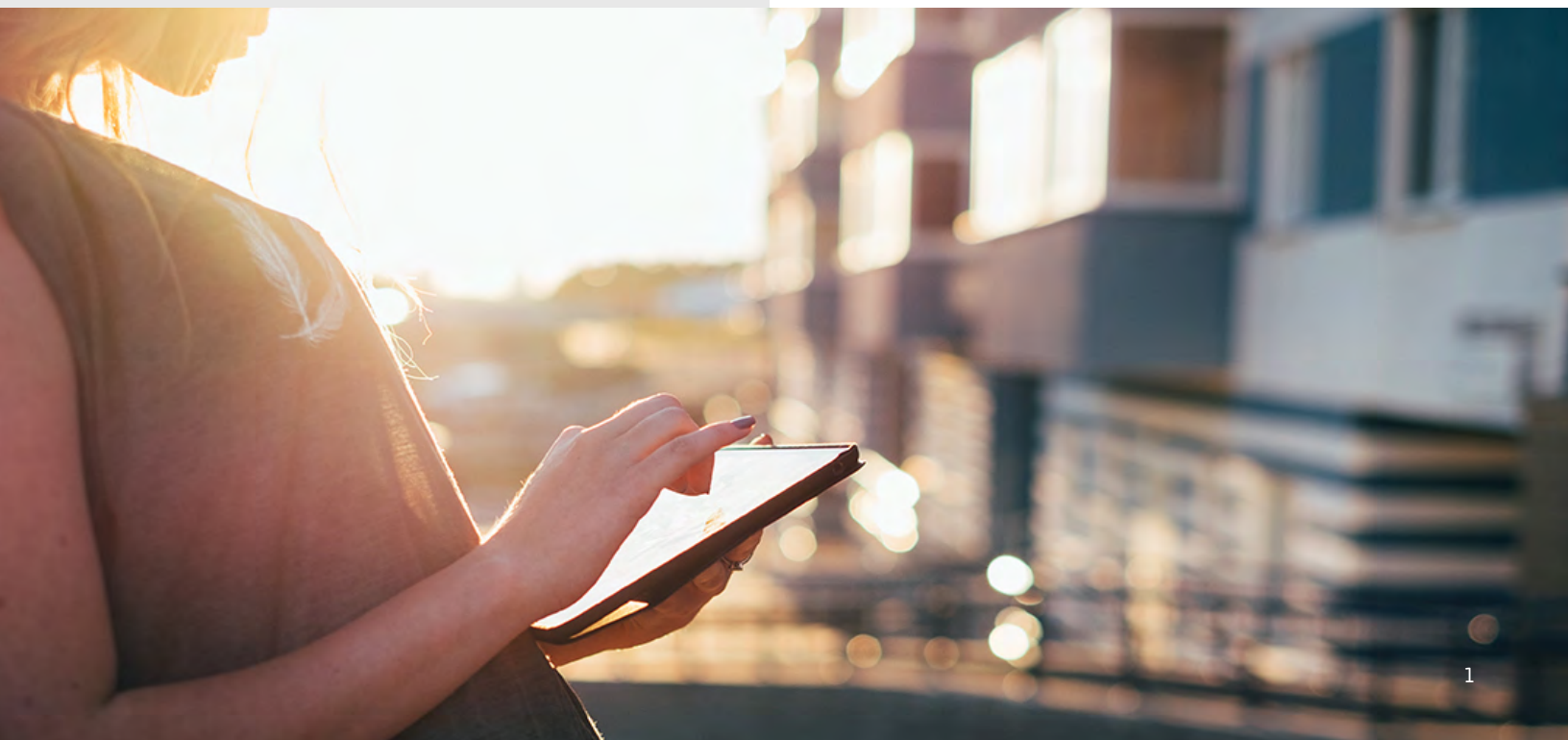
The key challenge for IT now? Streamlining technology to deliver a more productive employee experience, especially through greater intelligence and automation.

Citrix Workspace offers a secure way to deliver virtual apps and desktops from Google Cloud. The Citrix Workspace solutions traditionally installed on data center servers—including Citrix Virtual Apps and Desktops, Citrix Networking, and Citrix Content Collaboration (formerly known as Citrix ShareFile)—are available as Google Cloud Platform (GCP) services.

## Workspace intelligence and automation

Together, Citrix and Google Cloud enable customers to improve the apps that employees use most in their work.

Employees can do all of their work in the cloud—on any app, from any device. Citrix Workspace also organizes, guides, and automates work by using machine learning to simplify and streamline repetitive tasks and workflows. The out-of-the-box Citrix Workspace intelligent capabilities and a drag-and-drop microapp builder make it easy to provide an intelligent and customized user experience—especially with G Suite apps and cloud services.



# Secure workspace delivery and management

Deploying Citrix Workspace on Google Cloud Platform takes advantage of cloud elasticity for provisioning applications and desktops. IT departments have more flexibility to deliver enterprise-class, secure virtual apps and desktop access. Employees enjoy the smoother app access that saves time, effort, and frustration in their work.

Components of the joint solution include:

## Citrix Virtual Apps and Desktops

Citrix Virtual Apps and Desktops are the industry's leading solutions for application and desktop delivery, with over 100 million users worldwide. Citrix Virtual Apps and Desktops enable secure, remote access to Windows applications and desktops as well as Linux, web, and SaaS applications from any device, over any network. Deliver applications and desktops with a solution that strengthens data security, reduces costs, and increases user productivity.

## Citrix ADC

When moving workloads to the cloud, organizations must consider availability and failover options. While cloud-native load balancers provide a level of workload redundancy, they fall short of addressing the full spectrum of IT and developer requirements.

Offering enterprise-grade application load-balancing, advanced security, and micro-services integration, Citrix Application Delivery Controller (ADC) instances on GCP help the Google developer community utilize containers

and the Kubernetes orchestration system to easily build, deliver, and scale secure cloud applications.

Citrix ADC provides workloads running in Google Cloud with:

- **Authentication and access controls**, including multi-factor authentication, SSL VPN, ICA and RDP proxies
- **Application acceleration**, including content switching, caching, compression, SSL offload, and URL rewriting
- **Comprehensive security**, including DDoS protection, Web Application Firewall, and security analytics
- **Enterprise-grade workload availability**, including Layer 4-7 load balancing and global server load balancing

## Citrix Analytics

Using real-time machine learning, IT can quantify a user's in-app experience and detect system health anomalies for a proactive response. Citrix Analytics consolidates data into a single dashboard that provides end-to-end visibility and enables capacity planning and proactive response to performance degradation.





## Google Cloud Platform

Google Cloud Platform (GCP) enables IT to expand and contract computing resources on-demand and provision the exact resources required for enterprise workloads. This elasticity simplifies infrastructure management and reduces costs because customers pay exactly for what they use.

GCP runs on the best-in-class Google Cloud infrastructure, which is engineered to handle the most data and computation intensive workloads on the planet. This infrastructure gives customers the flexibility to scale quickly while still maintaining administrative control. GCP also frees customers from the overhead of managing infrastructure, provisioning servers, and configuring networks in order to focus on the business.

Google's infrastructure is designed, built, and operated with security at its core. Google protects customer data and intellectual property by monitoring data health, detecting anomalous behaviors, and proactively preventing security incidents by utilizing machine intelligence. The Google infrastructure regularly receives independent verification of security, privacy, and compliance controls to ensure ongoing compliance with stringent global standards for data protection.

## Citrix Workspace integration with G Suite

G Suite offers business-grade, cloud-based apps and services for work and collaboration. Citrix Workspace intelligent capabilities increase the productivity benefits of G Suite by automating everyday processes. For example, Citrix microapp templates make it easy to book conference rooms, send event reminders, and search the company directory.



## Enhanced security for Google SaaS offerings with Citrix Access Control

A new cloud service, Citrix Access Control, provides single sign-on as well as additional security and controls for G Suite.

By using this Citrix service, IT can control the actions users may take while accessing documents on Google Drive such as watermarking, clipboard access, and printing. Citrix Access Control also provides security for Gmail by blocking user access to phishing and malicious links embedded in email messages.

## User behavior insight with Citrix Analytics

With Citrix Analytics, customers gain visibility into user actions on G Suite apps such as Google Drive. The service detects user anomalies including unusual data downloads and accessing data at unusual times. Citrix Analytics can take autonomous preventative actions such as blocking user access to applications. User actions on unsanctioned SaaS applications (e.g. Dropbox) and unusual data uploads can be monitored and proactively controlled, which helps maintain the compliance and security of company-confidential information.

## Why customers run Citrix workloads on Google Cloud

- Enable smooth transition from on-premises to GCP deployments
- Deliver best-in-class user experience with Citrix HDX capabilities across Google's private global network
- Provide secure, ubiquitous access from any device with Citrix Workspace App
- Use Citrix ADC for delivering secure, high-performance, and globally available access to cloud apps
- Take advantage of Google Cloud's purpose-built, scalable infrastructure with security at its core
- Benefit from the multiyear technical, product, and go-to-market collaboration of Google and Citrix

Most of all, empower employees to work more productively with greater app integration, intelligence, and automation



# Key benefits of Citrix services and Google Cloud Platform

Deploying Citrix Workspace services on GCP provides agility in provisioning applications and desktops. In combination with the GCP Infrastructure as a Service (IaaS) architecture, enterprises can use Citrix Workspace to supplement the resources of existing on-premises data centers. This agility helps IT easily and seamlessly satisfy sudden workload demands and support business needs such as rapid geographic expansion.

Other key benefits of Citrix running on GCP include:

## Capacity on demand

- Efficiently scale up and down applications and environments, especially during busy seasons
- Host virtual apps on GCP to reduce capital expense and scale as needed
- Dramatically simplify IT management across on-premises systems and the cloud by providing a hybrid cloud solution
- Allow organizations to connect to their environments from anywhere, with the same “look and feel” experience for all employees

## Improved security

- Protect company-confidential information stored in Google Drive with features such as watermarking, controlled clipboard access for users, and controlled printing
- Protect users from inadvertently clicking on malicious links embedded in emails
- Help achieve compliance by restricting user traffic from going out to blacklisted and malicious websites
- Provide automatic enforcement of security policies based on user behavior and machine learning

## Cost-efficient cloud options

- Enable customers to leverage and deploy on current and familiar infrastructure for quick and simple deployments, reduced capital expenses, and optimized investments
- Expand cloud resources at the pace of business growth without the cost of additional infrastructure
- Manage costs through custom virtual machine (VM) sizing and resource sizing recommendations from the platform to pay only for what is used, when it is used, with zero waste.

## Pre-production validation

- Leverage flexibility of GCP to move to the cloud at the customer's own pace
- Quickly set up new OS workloads to introduce users to new systems and increase adoption
- Secure and optimize application access in Docker containers

## Top use cases for Citrix Workspace on Google Cloud Platform—enterprise customers

- Use the cloud to increase capacity on-demand during peak usage periods
- Reduce or eliminate on-premises infrastructure to avoid the large capital expense associated with new build outs
- Hybrid scenarios that allow customers to link premises-based environments to virtual deployments based on GCP
- Business continuity during any business disruptions caused by unforeseen events
- Leverage an existing GCP account to rapidly deploy Citrix Virtual App workloads
- Deploy a temporary environment to test new or updated applications prior to production rollout
- Use Citrix ADC and Citrix Gateway to improve performance and access to SharePoint and other Microsoft apps
- Deploy Citrix ADC to manage reliable, highly available secure authentication, access, and delivery of any application deployed on GCP
- Create a workspace user experience that's intelligent, simple, secure, and easy to manage
- Create and integrate microapps with ease





## Why Citrix and Google?

The integration of Citrix Workspace and Citrix Networking solutions with Google Cloud Platform, Chrome Enterprise, and G Suite creates a natural technology alignment that enables people to work better while reducing the management burden on IT. The combined technology of Citrix and Google Cloud gives employees a quality experience for high productivity. We do this by providing:

- A secure, intelligence-driven workspace
- Reliable connectivity and trusted security
- Flexible, integrated solutions for G Suite, digital workspaces, microapps, and hybrid cloud networking
- Unparalleled analytics, artificial intelligence, and data insights
- Transformative collaboration

---

**Learn more** [www.citrix.com/google](https://www.citrix.com/google)



### About Citrix:

Citrix (NASDAQ:CTXS) aims to power a world where people, organizations and things are securely connected and accessible to make the extraordinary possible. We help customers reimagine the future of work by providing the most comprehensive secure digital workspace that unifies the apps, data and services people need to be productive, and simplifies IT's ability to adopt and manage complex cloud environments. With 2017 annual revenue of \$2.82 billion, Citrix solutions are in use by more than 400,000 organizations including 99 percent of the Fortune 100 and 98 percent of the Fortune 500.

© 2020 Citrix Systems, Inc. All rights reserved. Citrix, the Citrix logo, and other marks appearing herein are property of Citrix Systems, Inc. and/or one or more of its subsidiaries, and may be registered with the U.S. Patent and Trademark Office and in other countries. All other marks are the property of their respective owner(s).